



SEARS CANADA

Factory Parts Catalog

Product No.	970-705032
Series	Sears
Color	stainless
Volts	115
Wiring Diagram	242121001
Market	Canada
Energy Guide	242146218
Service Data Sheet	240389646

Frigidaire

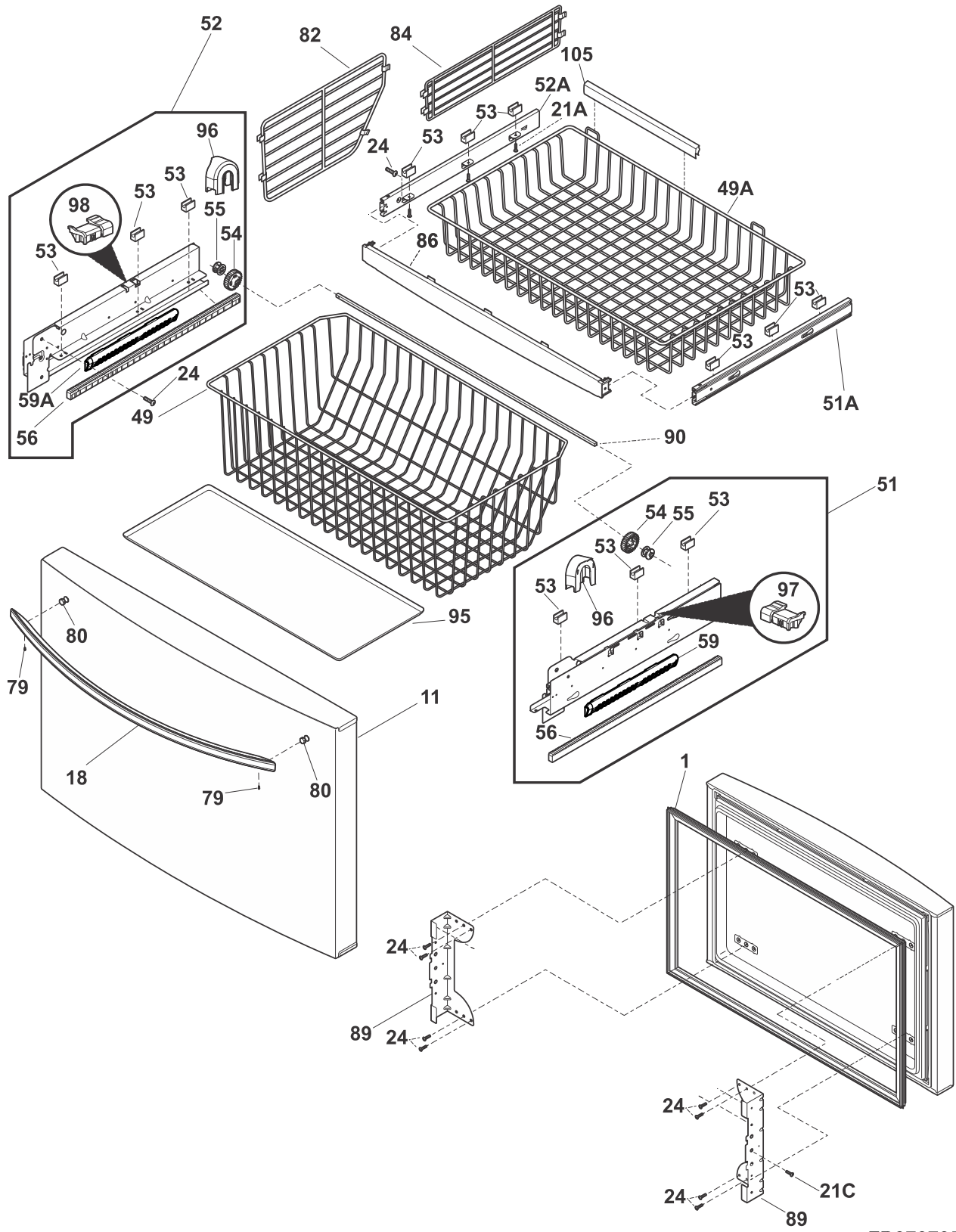
5855 TERRY FOX WAY
MISSISSAUGA, ONTARIO, CANADA L5V
3E4

Publication No.
5995612222
12/08/07
(EN/SERVICE/ECL)
137

FRENCH DOOR BOTTOM FREEZER/REFRIGERATOR W/DISPENSER

Model No.
970-7050

FREEZER DRAWER, BASKETS

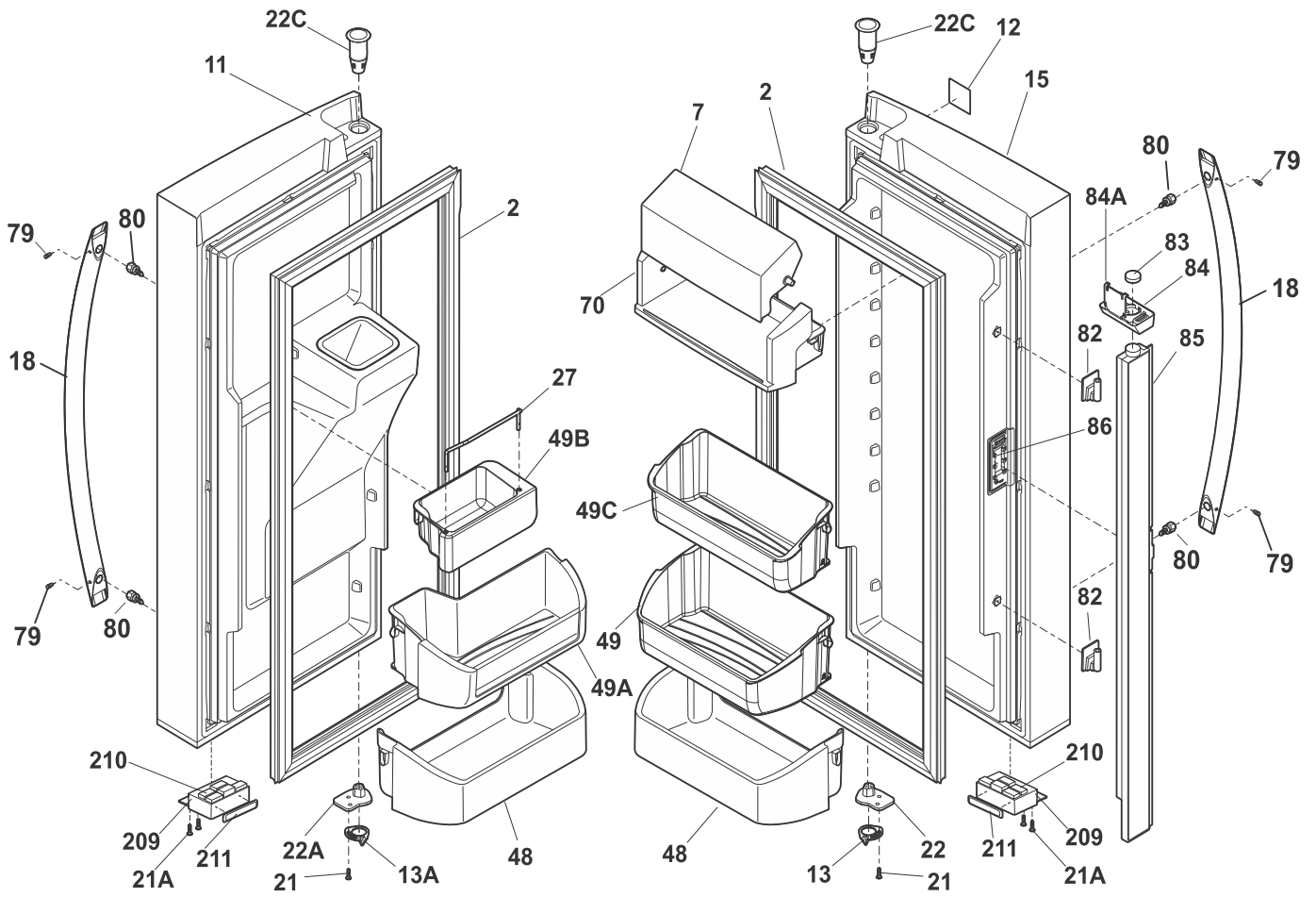


FD970705030

FREEZER DRAWER, BASKETS

POS. NO	PART NO.	DESCRIPTION
1 #	241778308	Gasket-frzr drawer, gray, magnetic
11	241987927	Door-frzr, stainless, complete assy
18	242198501	Handle-drawer, freezer, stainless, w/set screws
18*	241601001	Wrench, allen
18*	241701902	Screwdriver, hex, 3/32", ball driver
21A	241953902	Screw, #8 - 18 X .380, 3
21C	241899703	Screw, truss head, #10-32 x 1/4, zinc
21C*	242147601	Plate, tapping
24	240383406	Screw, truss hd quad, #10-16 x .500, zinc
49	242027001	Basket-frzr, lower
49A	241780806	Basket-frzr, upper
51	241883605	Slide Assembly, basket lower, RH, freezer drawer
51*	242039701	Screw
51A	241894202	Slide Assembly, basket, RH, freezer drawer
52	241883705	Slide Assembly, basket lower, LH, freezer drawer
52A	241894204	Slide Assembly, basket, LH, freezer drawer
53	241824201	Retainer-basket
54	241770201	Pinion
55	241770301	Pinion-idler
56	242163801	Rack, drawer travel, LH
56	242163802	Rack, drawer travel, RH
59	241979702	Closure, drawer
59A	241979701	Closure, drawer
79	218755407	Screw-set, 10-32 x 0.500
80	218755504	Screw-shoulder, #10 AB, handle mounting
82	242027101	Divider, basket
84	241780902	Divider, basket, upper
86	241807605	Trim, drawer, stabilizer
89	241972302	Bracket-freezer drawer
89*	241899602	Screw, hex whd, 1/4-20 x 3/8", connects frz, rails to door, (4)
89*	241979601	Bumper, rubber
90	241770702	Bar, timing
90*	242011101	Pin-lock
95	241770809	Tray, spill guard
96	242156901	Cover, pinion
97	241926401	Actuator, RH, white, light
98	241926402	Actuator, LH, white, light
105	242116801	Trim-basket

FRESH FOOD DOOR

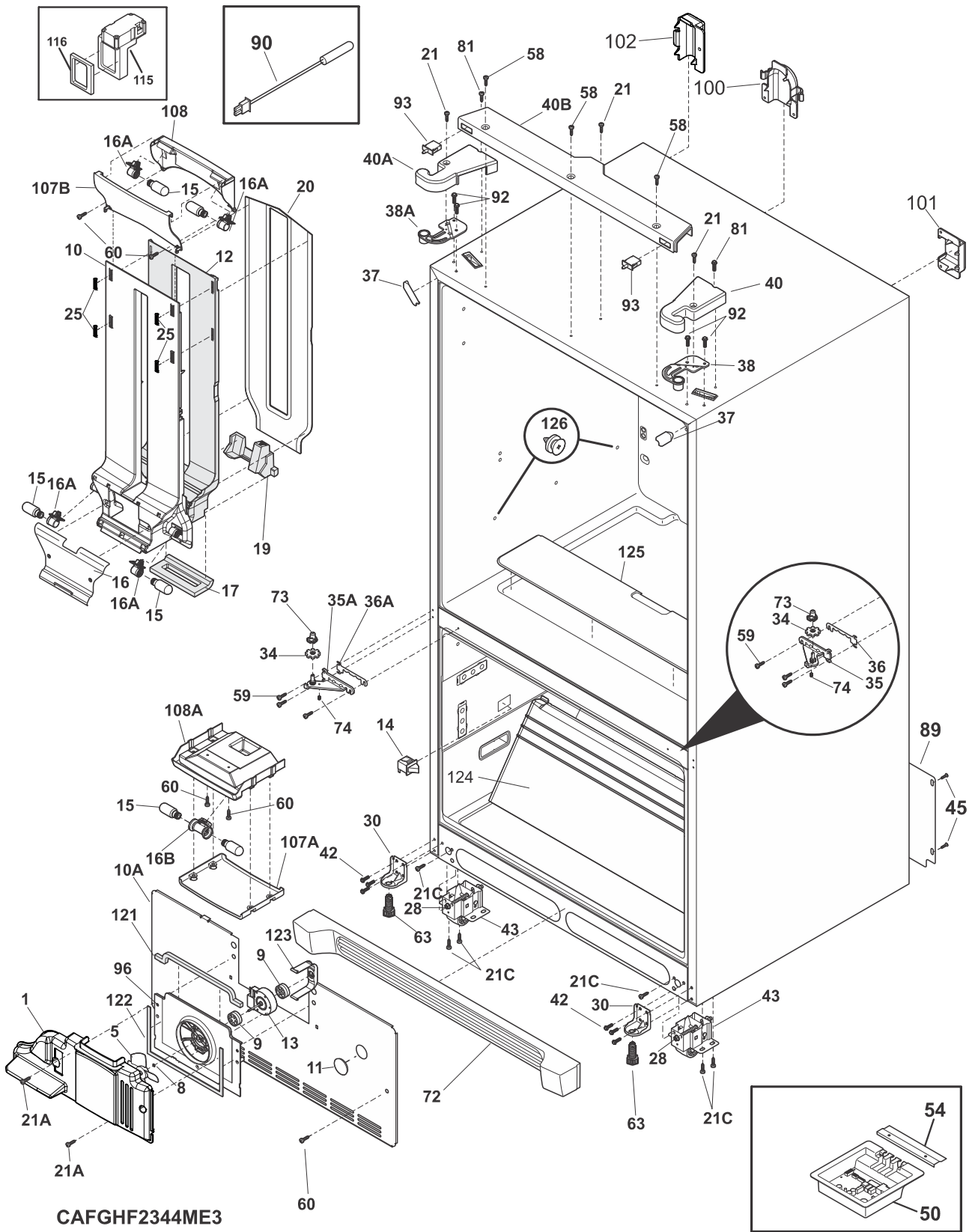


FF970705032

FRESH FOOD DOOR

POS. NO	PART NO.	DESCRIPTION
2 #	241778307	Gasket-refr door, gray, magnetic
7	242011401	Door-dairy, removable
11	242185608	Door-refr, stainless, LH
12	242052403	Label-nameplate
13	241868401	Door Stop, refrig RH, plated
13A	241868402	Door Stop, refr LH, plated
15	242185607	Door-refr, stainless, RH
18	242198301	Handle-door, FF, stainless, w/set screws
18*	241601001	Wrench, allen
18*	241701902	Screwdriver, hex, 3/32", ball driver
21	242017501	Screw, 10-32 x 0.750
21A	240363402	Screw, plask, #8-18 x .500
22	242075601	Cam, upper hinge, RH
22A	242075602	Cam, upper hinge, LH
22C	241760401	Bearing, hinge, top
27	241752702	Retainer, tall bottle
48	242071401	Bin-door, pseudo, white
49	242079701	Bin-door, gallon
49A	242071301	Bin-door, 2-liter
49B	242080201	Bin-door, dispenser
49C	242079901	Bin-door, 1/2 gallon
70	241804604	Compartment-dairy, removable
79	218755407	Screw-set, 10-32 x 0.500
80	218755504	Screw-shoulder, #10 AB, handle mounting
82	241779401	Hinge-mullion, upper/lower, flipper
83	241812201	Magnet, door
84	242190401	Guide-mullion, magnet cover, flipper
84A	242190501	Cover-mullion, magnet cover
85	241778811	Flipper mullion assembly, w/heater
85*#	241788401	Harness-wiring, flipper mullion
86	241779801	Hinge-mullion, center, flipper
209	242021001	Housing-magnet, white
210	241779103	Magnet, door
211	241979601	Bumper, rubber
*	242015001	Screw, #10 8-19 x 1/2
*	242068601	Bumper, RH door
*	242103001	Connector-water, straight, 5/16 to 5/16
* #	242040802	Harness-wiring, door
*	242064001	Screw
* #	5303918371	Dispenser heater kit, 115

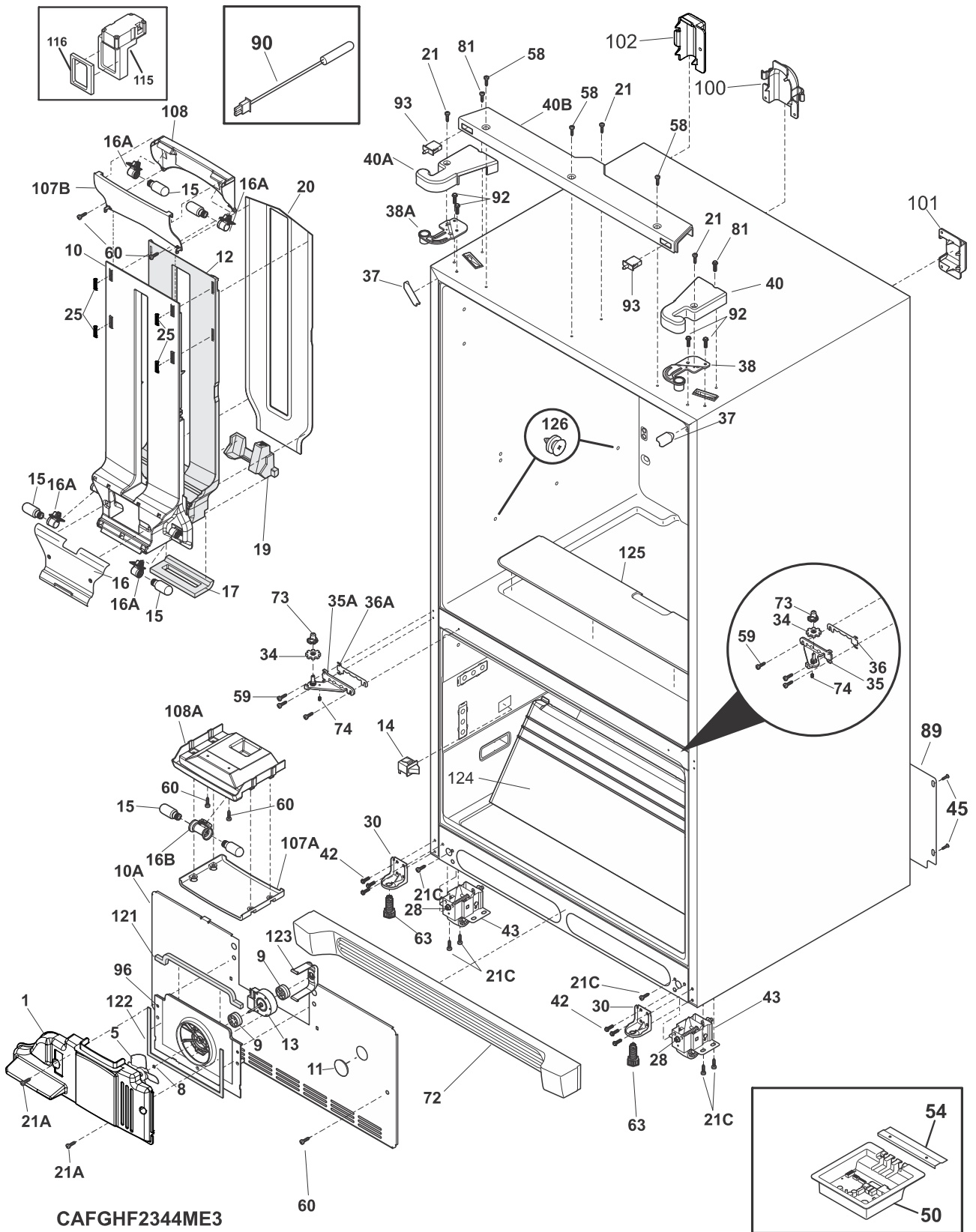
CABINET



CABINET

POS. NO	PART NO.	DESCRIPTION
1*	241860111	Gasket-evap, bottom
1*	241860112	Gasket-evap, upper
5 #	5308000010	Fan Blade, red, evaporator fan
8	215474201	Washer, "slinger", nylon, evap fan shaft
9	241518301	Bushing, motor mounting
10	242072001	Cover-air duct
10*	242004802	Foam Strip
10*#	242061602	Harness-wiring, air duct
10A	241860402	Cover-evap coil, lower
10A*	241860104	Gasket-coil cover
10A*	241860105	Gasket-coil cover
11	5303208309	Plug-hole, factory test
12	242072401	Insulation-air duct
13 #	241509402	Motor, evaporator fan
14 #	242060201	Switch-light/lamp, frzr door
15 #	241552807	Light Bulb
16	242072101	Cover-damper
16*	241953904	Screw, #8-18
16*	242072501	Cover-EPS, damper
16A#	240590402	Socket-light, top & mid
16A*	241969202	Harness-wiring, top light
16B#	241622802	Socket-light, frz light
16B*	241510802	Harness-wiring, frz light
17	242071901	Gasket-air duct/liner
19	242072601	Support-EPS damper
20	242072201	Cover-air duct, rear
21	241732101	Screw, 10-32 x 1/2
21A	241953901	Screw, #8-18
21C	218252201	Screw, #8 truss hd, 10-32CA x 0.500
25	241949502	Clip, air vent
28	240335502	Bolt-roller adj, hex washer head, 1/4-20 x 4.020, (2), special
30	241778701	Bracket-anti tip
34	241868301	Washer, hinge, nylon, (2)
35	241763005	Hinge-lower, zinc, RH
35A	241763006	Hinge-lower, zinc, LH
36	241868201	Spacer, door, lower RH
36A	241868202	Spacer, door, lower LH
37	240337615	Trim-cabinet corner, gray, (2)
38	241761301	Bracket-upper hinge, RH
38A	241761302	Bracket-upper hinge, LH
40	241778009	Cover-upper hinge, grey, RH
40A	241778010	Cover-upper hinge, grey, LH
40B	241862405	Cover-upper hinge, grey, center
42	240578902	Screw, hex head, 1/4-20 x 5/8
43	240335006	Roller Assy, front, (2)
45	241500303	Screw, hex washer head, 8-18AB x 1/2
50 #	242115242	Board-main power, board & housing
50*	241810104	Seal, housing
50*#	242119001	Harness-wiring
54	241532401	Channel
58	241853202	Screw

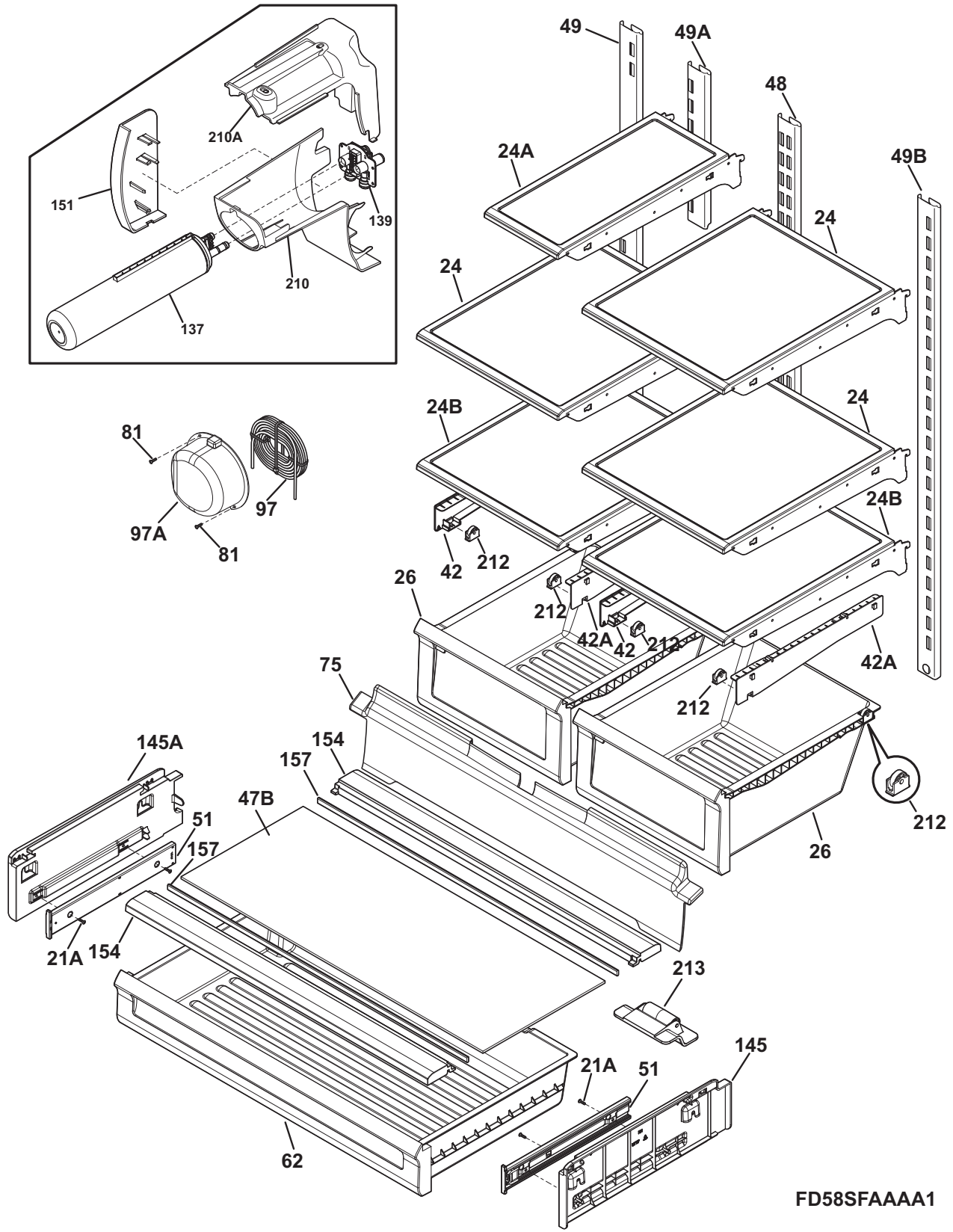
CABINET



CABINET

POS. NO	PART NO.	DESCRIPTION
59	240442706	Screw-#10-32 X 3/4, zinc
60	218362501	Screw, hex washer head, 8-18AB x 1.250, spacer, (2)
63	216396900	Screw, leveling foot, plastic, adjustable
72	242054804	Grille/Kickplate
73	242075701	Cam-lower hinge
74	242026701	Screw, #6-32 x 9/16
81	242025601	Screw, hex head, #10-32 x 3/8
89	241733905	Cover-access, wlabel
90 #	240597203	Sensor, (2)
92	241710601	Screw, hex washer hd, 1/4 x 7/8, hinge mtg
93 #	241835505	Switch-light, grey
96	241860601	Shroud-evap fan mtg
100	242157601	Cover, tubing, eps block
101	242157801	Cover, tubing, eps block
102	242157501	Cover, tubing, eps block
107A	241971601	Shield-light, frzr
107B	241971202	Shield-light, upper
108	241971401	Cover-wiring, top air duct
108	241971402	Cover-wiring, top air duct
108*	242118101	Shield, wiring cover
108A	241971801	Cover-wiring, freezer light
*	242118001	Shield, wiring cover, freezer
115	241518501	Damper, motorized
116	241518601	Seal-damper, foam
121	241860103	Gasket-evap, upper
122	241860102	Gasket-evap, bottom
123	242135301	Clip, evap fan motor, evap fan motor
124	242006902	Duct-air, freezer
125	242071201	Cover, sump
126	242081301	Screw-shoulder
*	240479601	Plug, button, cab liner holes
*	241969001	Cap, screw
* #	242015904	Harness-wiring
*	5303918416	Thermistor kit, T-3 suction lin, icemaker

SHELVES

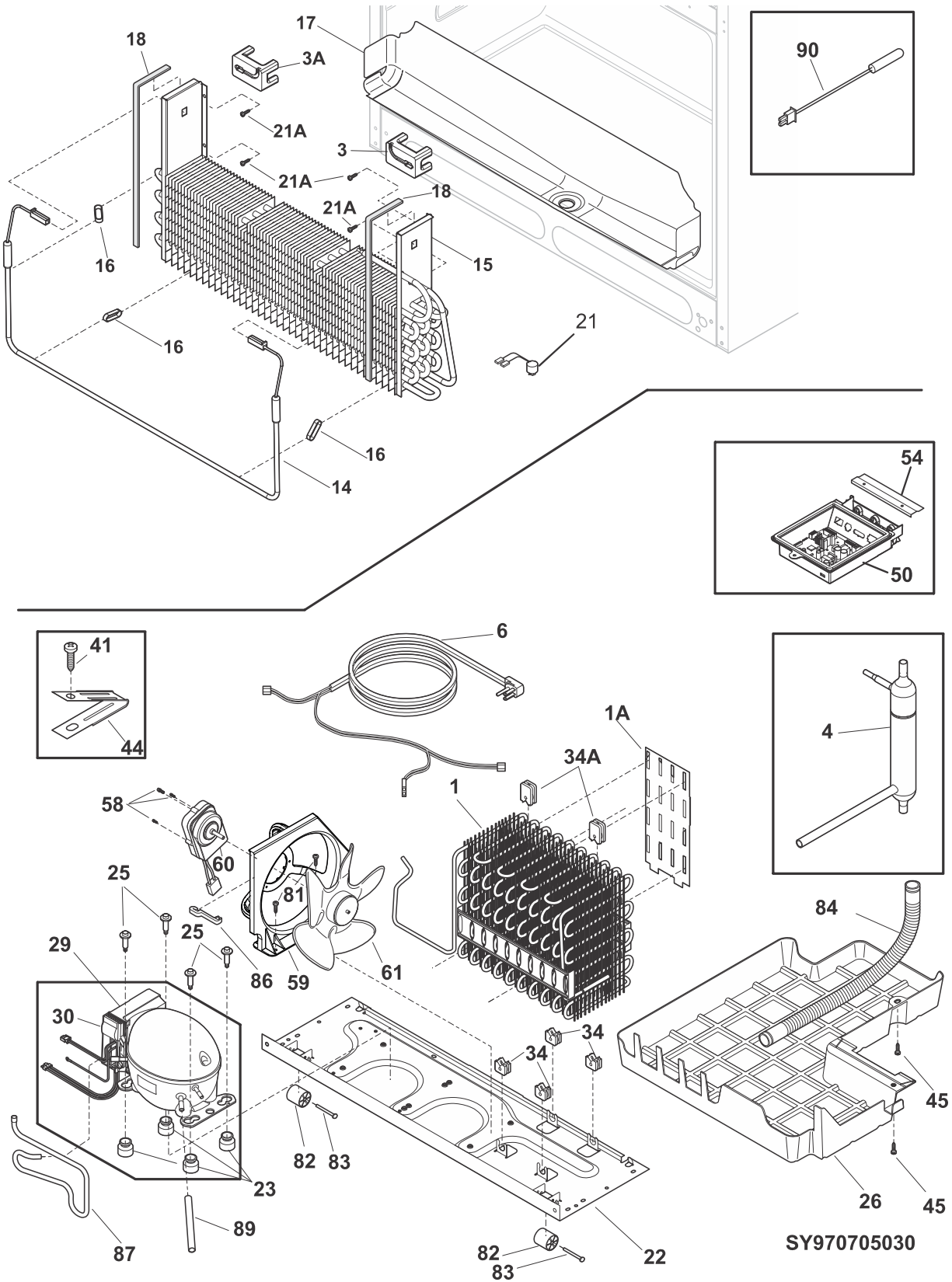


FD58SFAAAA1

SHELVES

POS. NO	PART NO.	DESCRIPTION
21A	241953902	Screw, #8 - 18 X .380, 3
24	242068709	Shelf, sliding, cantilever, "Spill-Safe"
24A	242068710	Shelf-"Spill-Safe", cantilever, 1/4 width, sliding
24B	242068711	Shelf-freezer, fixed wire
26	241801807	Pan-crisper, (2)
42	242079401	Support, crspr pan rolle
42*	241953901	Screw, #8-18
42A	242079402	Support, crspr pan rolle
47B	242082302	Glass, deli cover
48	242122101	Channel-shelf mtg, center
49	242122201	Channel-shelf mtg, side, LH
49A	242122001	Channel-shelf mtg, center, icemaker shelf
49B	242122301	Channel-shelf mtg, side, RH
51	242120001	Slide-deli
62	242096807	Pan-deli
75	242072702	Shield-light, refr
81	240383407	Screw, truss hd quad, #10-16 x .500, white
97	242082002	Water Tank, coil
97A	242117301	Cover-water tank
137#	241791603	Filter-water, carbon
139	242009601	Base-water filter
145	242120101	Support, rail
145A	242120102	Support, rail
151	242069701	Cover-water filter
154	242082401	Support
154*	242015001	Screw, #10 8-19 x 1/2
157	241872201	Beam-crisper cover
210	241983809	Housing-water filtr
210A	241998302	Mount-water filter
212	5304479194	Roller Assembly, crisper pan
213	242010901	Roller Assy, deli pan
*	240389646	Service Data Sheet
*	242146218	Label, energy guide
*	242185901	Installation Instructions
*	242211701	Owners Manual, eng/frn

COOLING SYSTEM

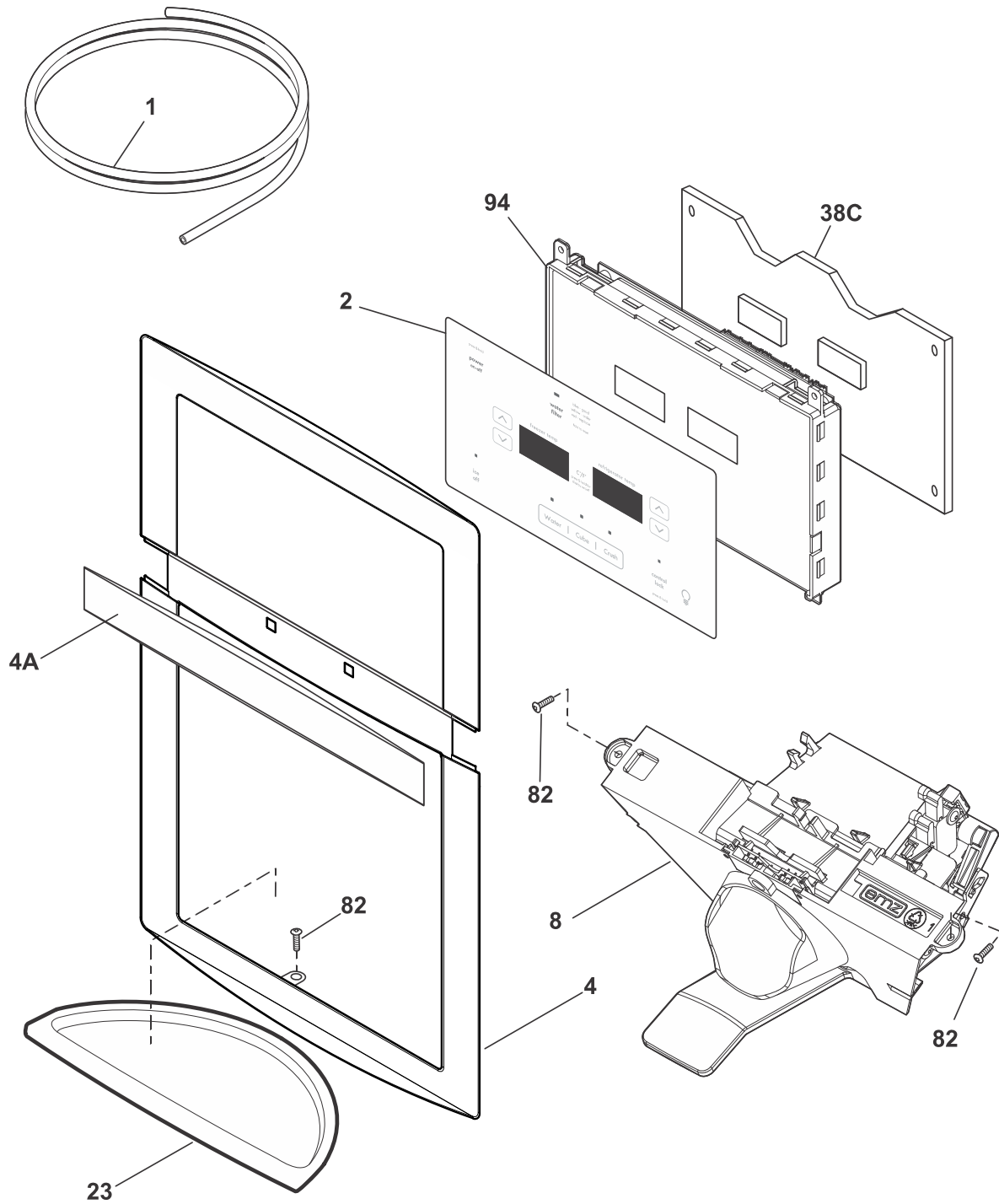


SY970705030

COOLING SYSTEM

POS. NO	PART NO.	DESCRIPTION
1 #	241862901	Condenser
1A	241987301	Deflector-air, condenser
3	241838401	Block-evap coil, styrofoam insul, RH
3A	241838402	Block-evap coil, styrofoam insul, LH
4 #	242047603	Drier-filter
6 #	241516901	Cord-service
6* #	242135901	Harness-wiring, main, wiring
6* #	242141401	Harness-wiring, machine compt
14 #	5303918410	Defrost Heater Kit, 28'
15 #	5303918569	Evaporator Kit, C/D FDBM
16	5308000110	Strap-evap/heater, aluminum, (2)
17	241791201	Trough-drain
18	241860101	Gasket, closed cell
21 #	242046001	Thermostat-defrost
21A	218362501	Screw, hex washer head, 8-18AB x 1.250, spacer, (2)
22	241602112	Base-compressor, w/rollers
22*	218252201	Screw, #8 truss hd, 10-32CA x 0.500
23	218513300	Grommet-compr mtg, (4)
25	240491503	Screw-compressor mtg, 1/4-28 x 1.16, (4)
26	241920604	Pan-defrost
29 #	5303918437	Compressor Kit
30 #	241577505	Invertor
34	241929901	Grommet-cond mtg, (4)
34A	241929902	Grommet-cond mtg, (4)
41	240555002	Screw-#8-32 X 3/8
44	215174700	Clamp-service cord, strain relief, galv steel
45	5304455650	Screw, hex washer head, 8-15A x 0.625, Low Profile
50 #	242115242	Board-main power, board & housing
50*	241810104	Seal, housing
50*#	242119001	Harness-wiring
54	241532401	Channel
58	240569201	Screw, 8-18 x 0.500
59	241946106	Shroud-cond fan
59*	240346701	Tape-foam seal, shroud
60 #	242018301	Motor-condenser fan
61	241639501	Blade-condenser fan
81	240359403	Screw-fan shroud, (2)
82	5304418225	Roller, compressor base, rear, (2)
83	5304455655	Rivet, flat head, 1/4 OD x 1-3/4, roller pin
84	241830902	Tube-drain, lower
84*	242036801	Clip-tube, drain
86	240409302	Spacer-cond tube, black
87	241846302	Tube-suction, jumper
89	215346900	Tube-process
90 #	240597203	Sensor, (2)
90*	241842301	Cap-thermistor
*	3205266	Edge Protector, wiring harness
*	218515401	Clip-grille
*	241947701	Spacer, heat exchanger
*	5303918416	Thermistor kit, T-3 suction lin, icemaker
*	5303918428	Hot Tube Repair Kit, service
* #	241510904	Harness-dispenser, grounding
*	5303918445	Heat Exchanger Kit, suction line, service
*	5303918446	Heat Exchanger, icemaker

CONTROLS & ICE DISPENSER

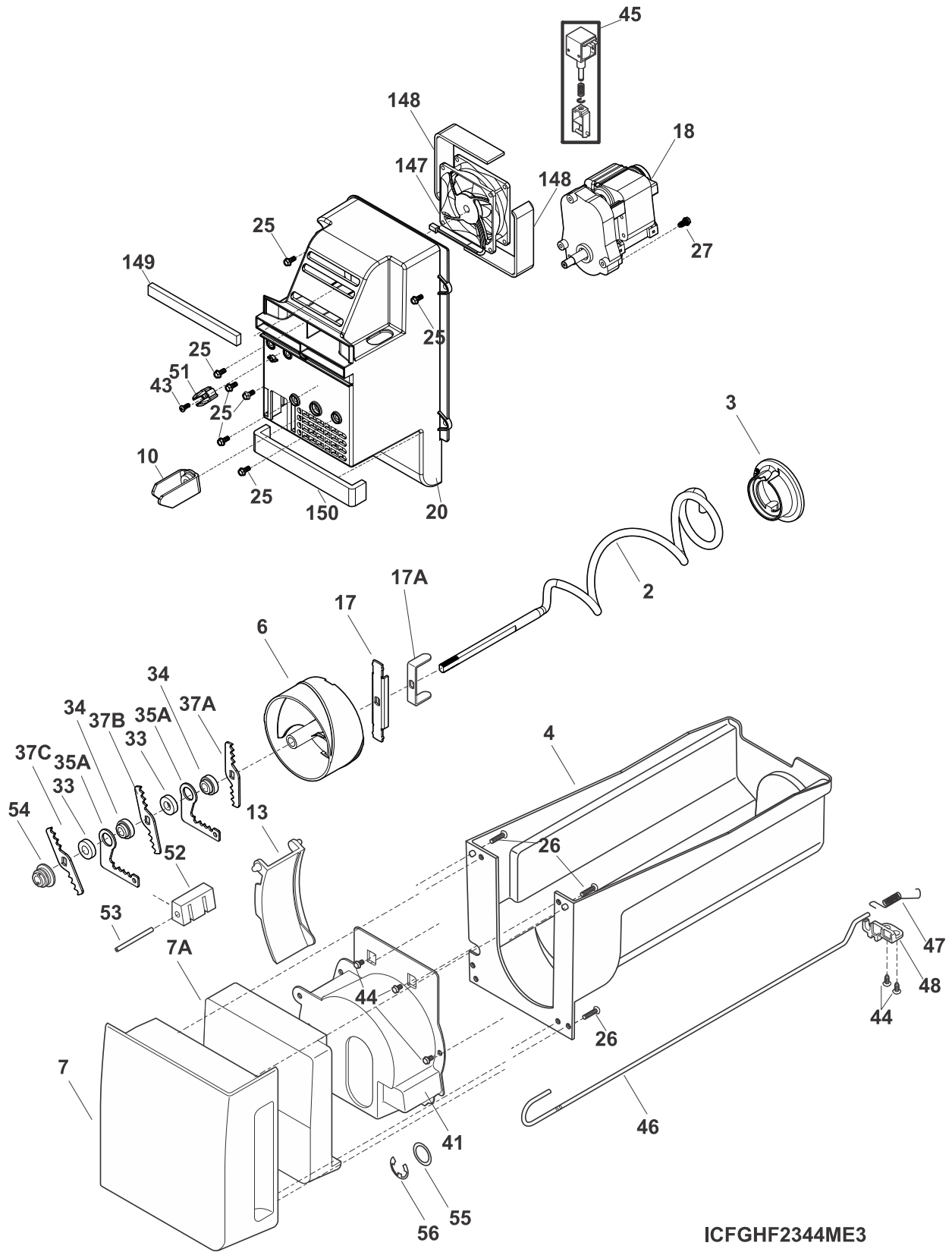


ID970705030

CONTROLS & ICE DISPENSER

POS. NO	PART NO.	DESCRIPTION
1	218976435	Tube-water inlet, 5/16 - 59", yellow, CD
1*	241920104	Tube-water, assembly, 5/16 - 54", green, ice maker fill, w/extension
1*	241964705	Tube-water, 1/4 - 24", green
1*	241965906	Tube-water, 5/16 - 67", natural
1*	242169404	Tube-water, ice mold fill, 1/4 - 44", blue, w/extension
2 #	242166917	Switch, membrane, black
4	242034203	Cover-module, gray
4A	242033903	Trim, dispenser, gray
8	242074204	Module-dispenser
23	242034004	Drip Tray, gray
38C#	241973711	Board-control
82	241953902	Screw, #8 - 18 X .380, 3
94	242034101	Housing-control
*	242105401	Chute-ice
* #	5303918371	Dispenser heater kit, 115
* #	241510904	Harness-dispenser, grounding

ICE CONTAINER

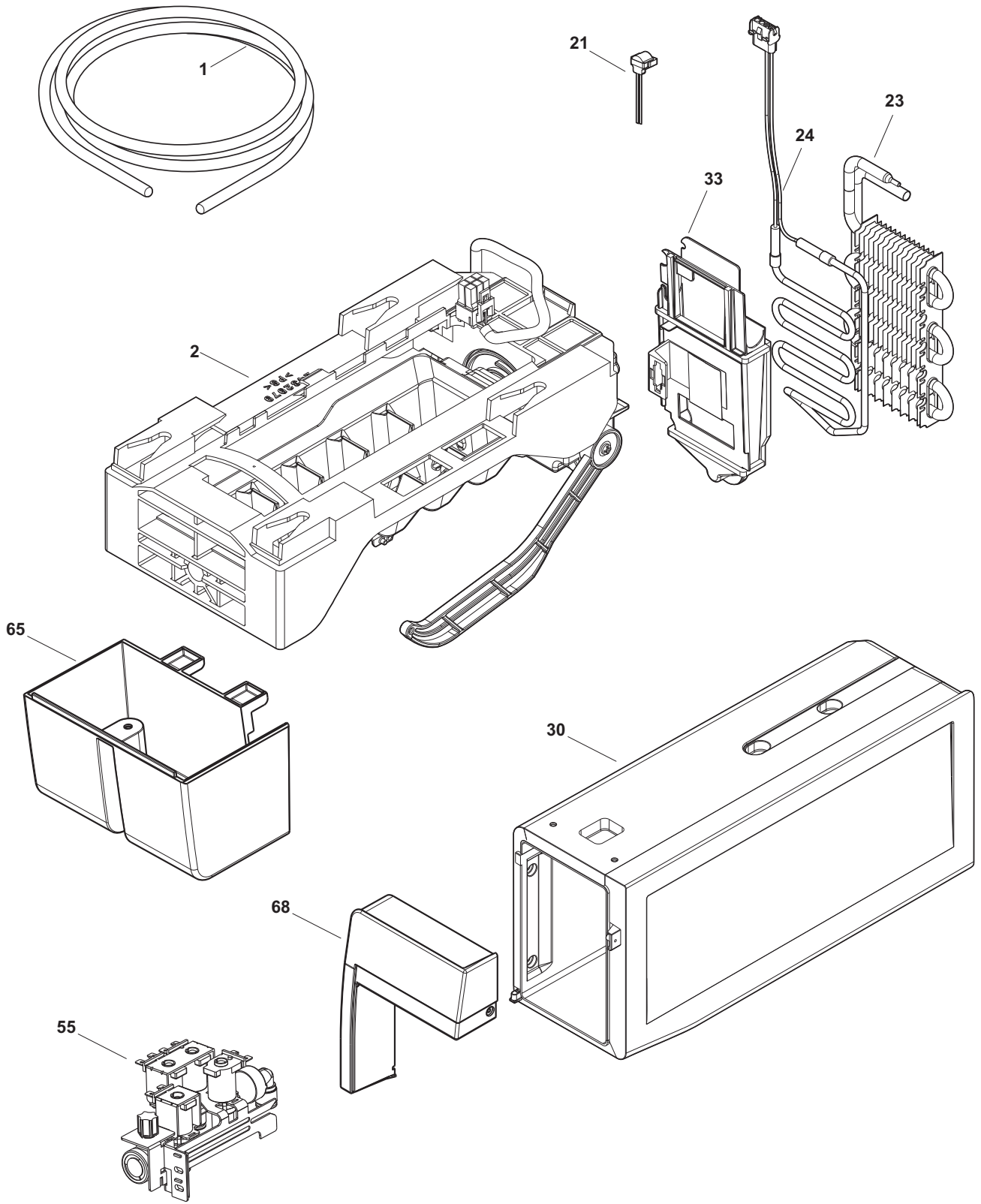


ICFGHF2344ME3

ICE CONTAINER

POS. NO	PART NO.	DESCRIPTION
2	241952301	Auger-ice
3	241830201	Cam-drive
4	242100201	Container-ice
6	241829802	Drum-ice disp
7	242093203	Cover, bucket front
7A	242095201	Insulation, i/container frt
10	241829001	Bar-drive
13	242106201	Gate
17	241830602	Drive Blade
17A	242182601	Blade, ice breaker
18 #	241816602	Motor-auger
18*#	242095803	Harness-wiring, air handler
20	242095701	Housing-air handler, Gen II IM
25	241690701	Screw, hex washer head, 8-32T x 0.375
26	242015001	Screw, #10 8-19 x 1/2
27	240555004	Screw, 8-32 x 3/8, black
33	241684801	Spacer
34	241689801	Spacer
35A	241830401	Fixed Blade, round
37A	241830301	Blade, crusher #1
37B	241830302	Blade, crusher #2
37C	241830303	Blade, crusher #3
41	242093301	Housing-crusher
43	241641502	Screw
44	241953901	Screw, #8-18
44*	242030601	Washer, star/lock
45 #	241675701	Solenoid Assy, 115V
46	242123704	Control Rod
47	241839002	Spring-control rod
48	241830101	Bracket-control
51	242095501	Pin-anti twist bkt Gen II IM
52	241830701	Spacer-fixed blades
53	241869601	Pin-spiral, fixed blades
54	241829601	Nut-auger
55	241690306	Washer
56	241690201	E-ring
147#	242119401	Fan Assembly, motor, with blade
148	242095406	Gasket
149	242095404	Gasket-evap housing, .250x.250x5.250
150	242095407	Gasket
*	242100103	Ice Container Assy, w/moving parts

ICE MAKER

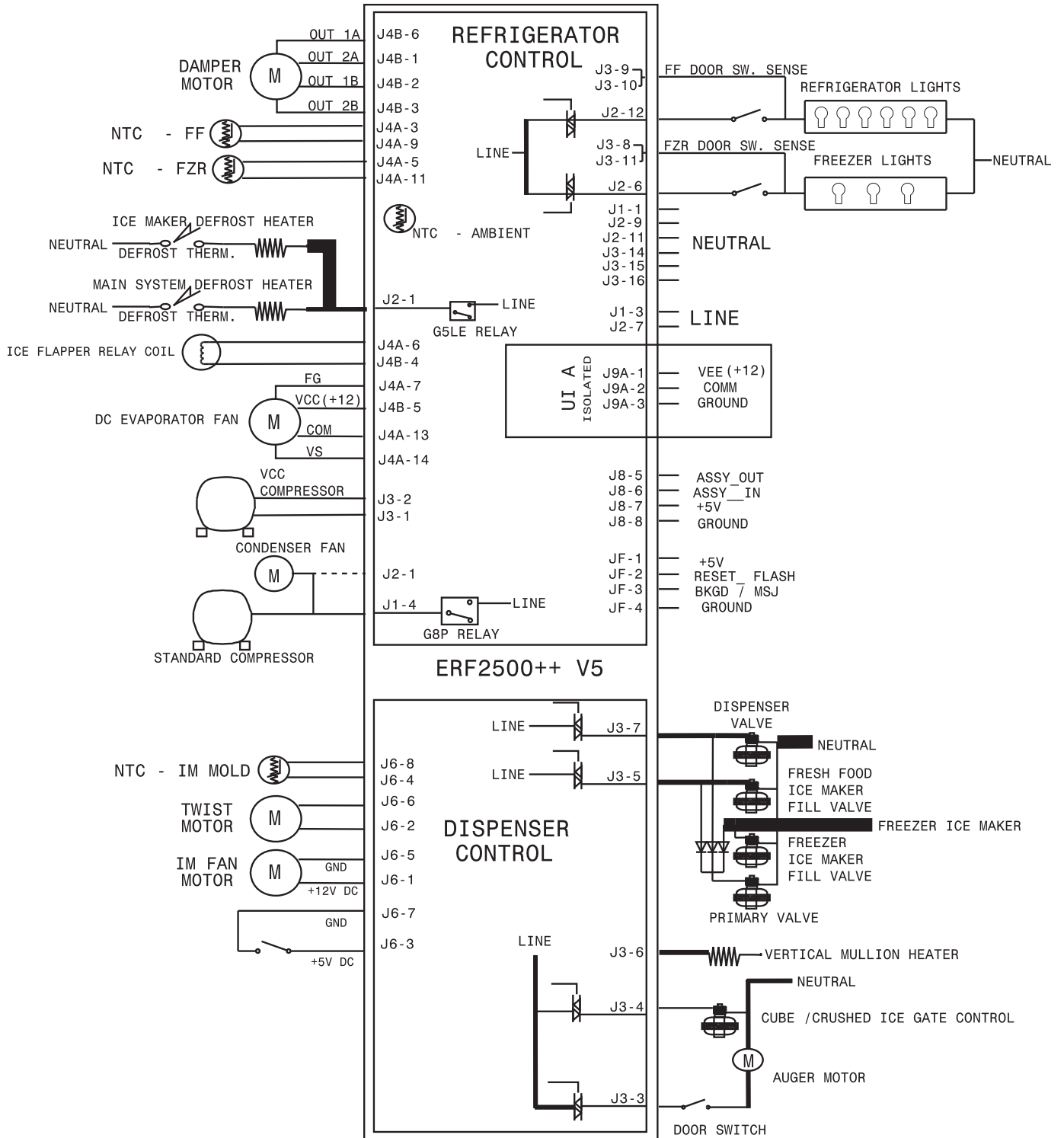


FD58I115FFT0

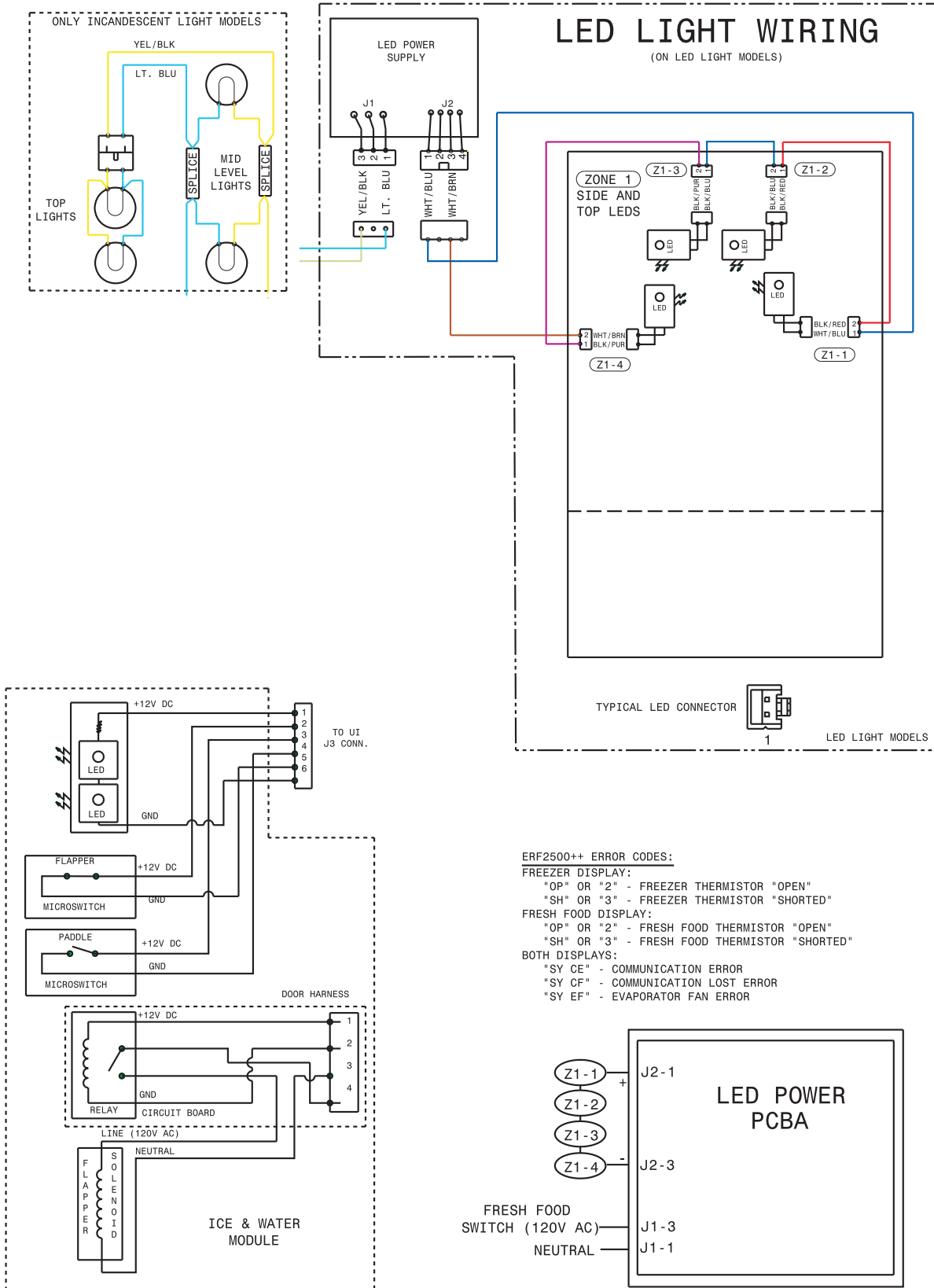
ICE MAKER

POS. NO	PART NO.	DESCRIPTION
1	218976435	Tube-water inlet, 5/16 - 59", yellow, CD
1*	241844403	Tube-water, ice mold fill, black, extension
1*	241920104	Tube-water, assembly, 5/16 - 54", green, ice maker fill, w/extension
1*	241964705	Tube-water, 1/4 - 24", green
1*	241965906	Tube-water, 5/16 - 67", natural
1*	242082105	Tube-water, 5/16 - 93.5", brown
1*	242082106	Tube-water, 5/16 - 69.5", natural
1*	242169404	Tube-water, ice mold fill, 1/4 - 44", blue, w/extension
2 #	243297603	Ice Maker, complete, 115 V
21 #	5303918568	Thermostat-defrost, defrost, icemaker evap
23 #	242094603	Evaporator, ice maker
24 #	242094802	Heater-defrost
30	242142202	Cover, icmkr & bucket
30*	241695906	Screw, 10-16AB x 0.50
30*	242095406	Gasket
30*	242095407	Gasket
30*	242124801	Gasket, .4X .75X 16.00"
30*	242124802	Gasket, .9X .75X 10.75"
30*	242146001	Gasket, housing funnel, 2.69X 3.05X .25, top, w/hole
33	242094401	Housing-evaporator
33*	242095402	Gasket-evap housing, .250x.250x3.300
33*	242095403	Gasket-evap housing, .250x.250x7.750
33*	242095404	Gasket-evap housing, .250x.250x5.250
33*	242095405	Gasket-evap housing, .250x.250x6.600
33*	242095408	Gasket-evap housing, .250x1.00x6.600
55 #	242102201	Valve-water, 4 position, 115 V
55*	218709101	Screw, hex head, 10-32 x 0.500
55*	240363602	Screw-shoulder
65	242145902	Cover-wiring
65*	241953902	Screw, #8 - 18 X .380, 3
68	242095002	Cover, -front, bucket trim
68*	242096001	Insulation, i/container frt
*	240396801	Clamp, tube/wiring, nylon, black/natural
*	241503901	Connector-water, straight, 5/16 to 1/4
*	241641502	Screw
*	242103001	Connector-water, straight, 5/16 to 5/16
*	242105401	Chute-ice
* #	5303918446	Heat Exchanger, icemaker
*	5303918571	kit-water fill chute

WIRING DIAGRAM



WIRING DIAGRAM



WIRING DIAGRAM

