

Karcher Pressure Washer

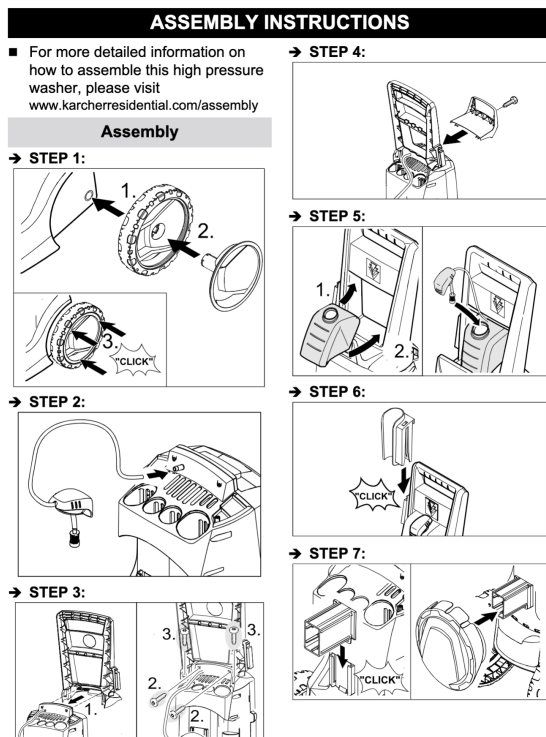
- [Overview](#)
- [Assembly](#)
- [Problem](#)
- [Parts Ordered](#)
- [References](#)

Overview



Make	Karcher
Model	K 5.65 QC
PSI	2000 PSI
Water Volume	1.4 GPM
High Pressure Hose	25 ft.
Unit Weight (with out accessories)	32 pounds
Unit Dimensions	13.5" x 13.8" x 34.3"
Child Safetly Lock	
Onboard Removable Detergent Tank	
Induction Motor	

Assembly



Problem

After disassembling the unit, I discovered that the water inlet was leaking at the seam of the pipe.

An attempt was made to repair by gluing on some pex pipe to the outside and clamping. This helped but did not fix 100%.




If I had used the right type of glue/pipe I might have had better luck.

So, I decided to order the part online (\$20) for a total of \$40 including taxes and shipping.



Parts Ordered

Part	Image	Notes
Inlet Fitting		<p>9.755-400.0 Karcher Inlet Fitting Replacement Replaces 9.760-785.0 9.762-182.0</p> <p>https://www.drmmower.ca/products/9-755-400-0-karcher-inlet-fitting-replacement</p>

References

Reference	URL
Operation Manual	 <p>k_565.pdf</p>
Parts List	k5_1334782562.pdf
Parts	https://www.repairclinic.com/ProductDetail/1928180