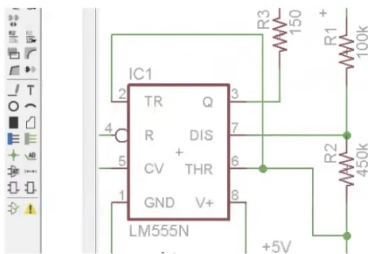


# Getting Started with Autodesk Eagle

- Overview
- Installation
- Control Panel
- Schematic
  - Parts
    - Adding Parts to your Schematic
    - Adding Additional Libraries
    - Popular Part Libraries
  - Add a Frame
  - Moving/Rotating Parts
- Wiring it Up
  - Add Supplies
- References

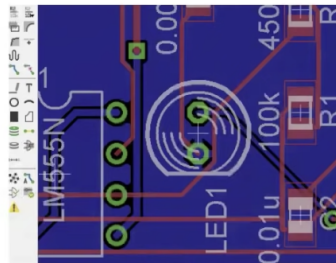
## Overview

Create schematics, circuit board designs and PCB libraries with Eagle.



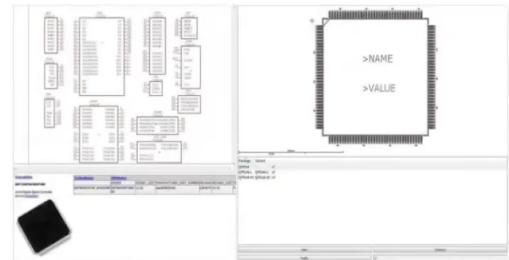
### Electronic Schematic

Logical Representation of a Circuit Board



### Printed Circuit Board

Works with the physical aspects of the design



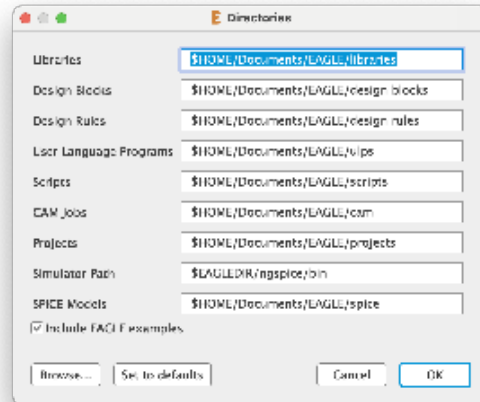
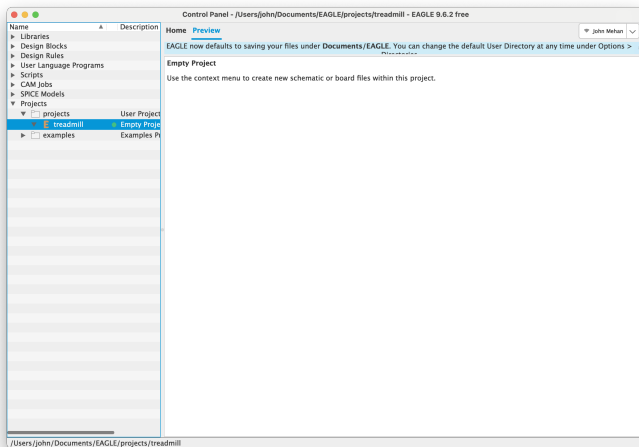
### PCB Libraries

symbols, footprints, 3D models, datasheets, and more.

## Installation

Download from: <https://www.autodesk.ca/en/products/eagle/free-download>

## Control Panel

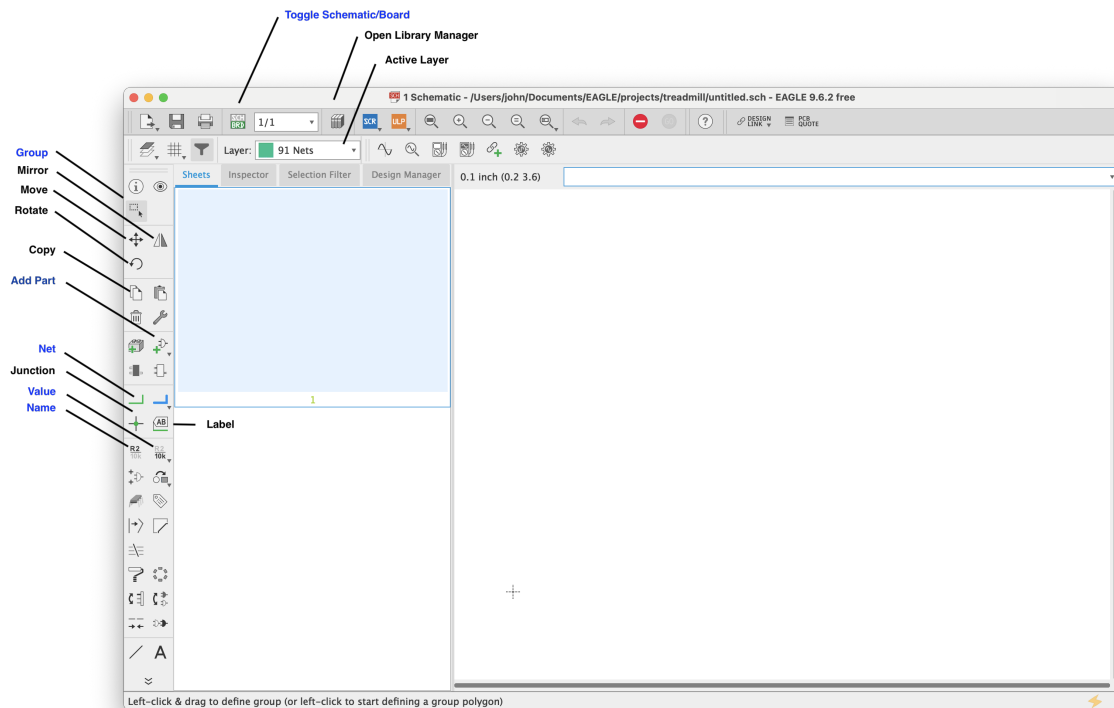


Starting here, we can start by creating a new project. By default the project folder is located under \$HOME/Documents/EAGLE/projects

We can create a new project by right clicking projects and selecting **New Project**.

## Schematic

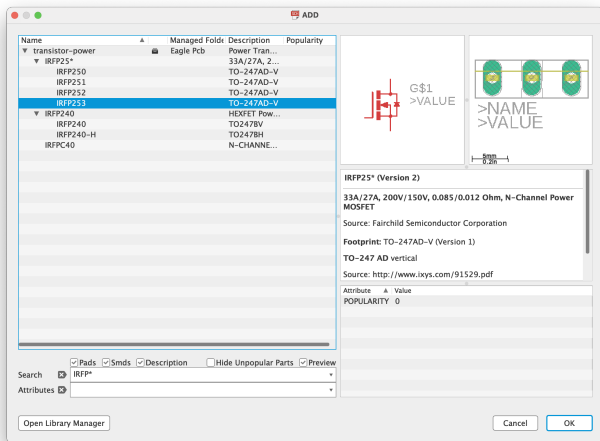
We can create a new schematic for our project by right mouse clicking our project and selecting **New Schematic**.



## Parts

### Adding Parts to your Schematic

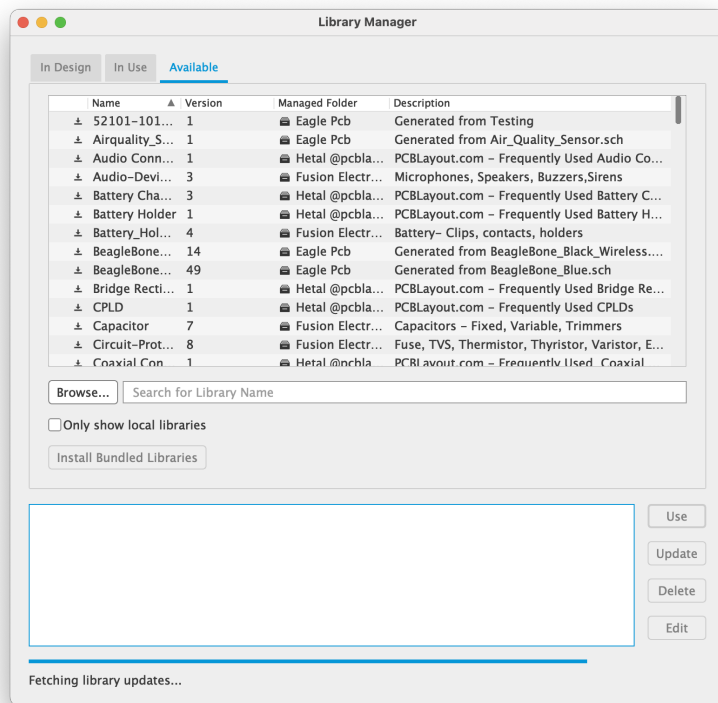
Click the **Add Part** icon on the right left menu. We can use wildcards ( \* and ? ) to find a suitable part.



## Adding Additional Libraries

From Add Parts screen, click **Open Library Manager**.

From the Library Manager screen, click the Available tab and search for new libraries to add.



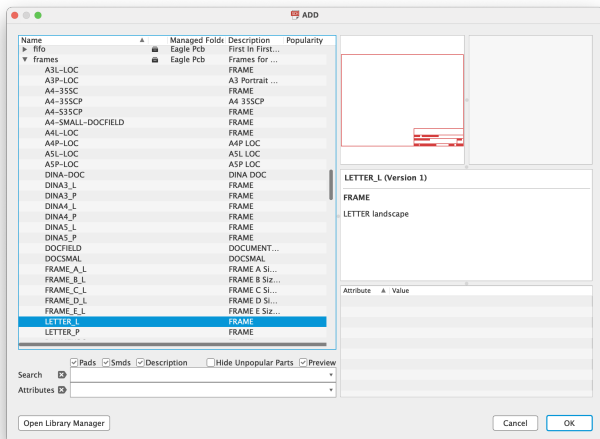
## Popular Part Libraries

Library	Contains
rcl	most everything
supply	supply symbols
pinhead	connectors

frame	page frames
con-faston	connectors - blade, etc..

## Add a Frame

Add a frame to your schematic by adding a part and scrolling down to **frames**. Here you can find a frame for your page size like **LETTER\_L**.

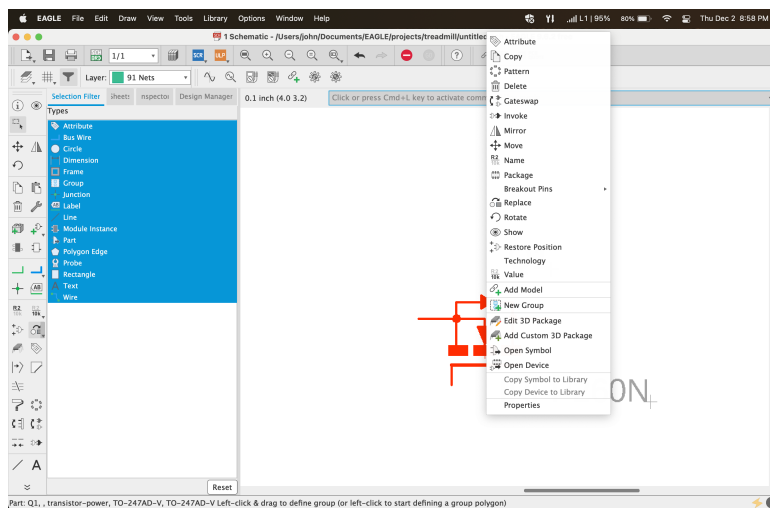


## Moving/Rotating Parts

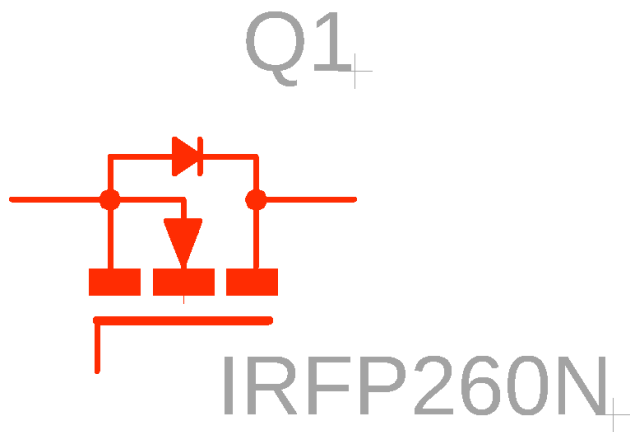
Click Group from the left menu and then highlight a section of your schematic to select a single or multiple parts.

Click and hold the group to move parts. Release where you want to place the part.

Right mouse the selected group to see options.

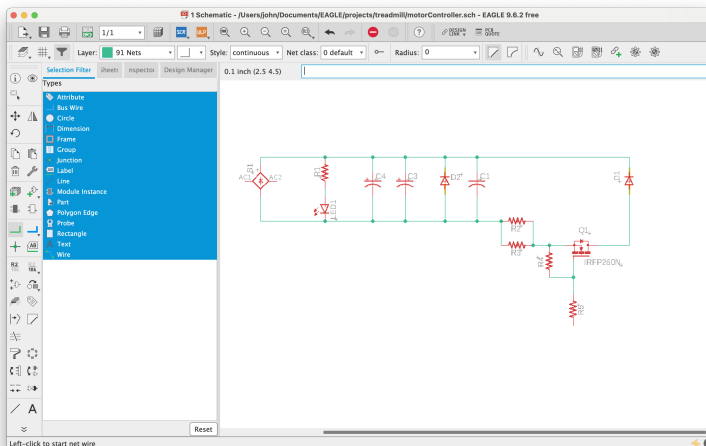


Click the cross hairs to manipulate parts of the group. (see the crosshairs at the bottom right corner of Q1).



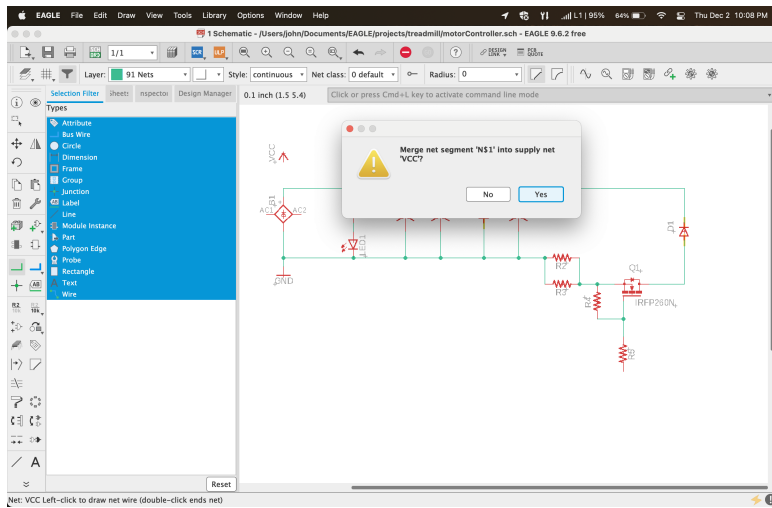
## Wiring it Up

Select Net from the left menu and wire it up. Pretty easy.



## Add Supplies

When adding a supply, it will ask you if you want to merge. Click Yes.



## References

Reference	URL
Getting Started Autodesk EAGLE MAY 2019	<a href="https://www.youtube.com/watch?v=v979MUCKVoo">https://www.youtube.com/watch?v=v979MUCKVoo</a>